

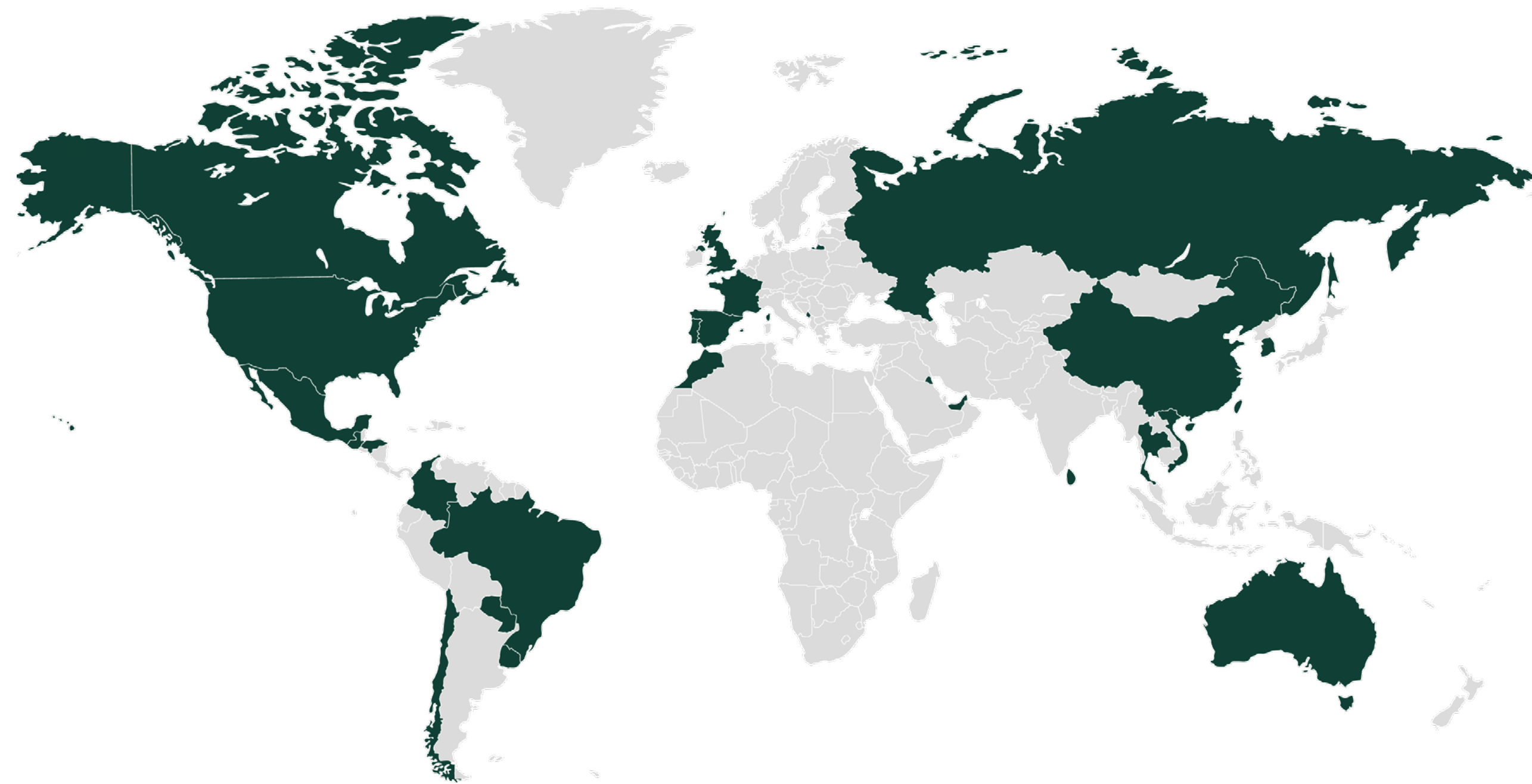
# VIPEQ

Quartz Particles  
Coating STONE VIPEQ

# VIPEQ INTERNATIONAL

## Our Quality. Your Satisfaction.

At VIPEQ® we are committed to continuous improvement, to extending the quality of our products in services, to manufacturing with ecological and sustainable materials that promote a circular economy and minimize environmental impact.



We seek the highest quality of manufacturing, and are dedicated to meeting delivery deadlines with personalized attention.

We are creating a culture of responsibility through company policies such as our code of conduct for our suppliers.

We have also implemented a quality management system according to the ISO 9001: 2015 Standard, which facilitates continuous improvement in the management of the company.





## Environment: Ecological and Sustainable Products.

Our Vipeq Thermal CorkShield™ product has gone through ICC certification, meeting various standards in compliance with international building codes, ASTM, UL, and ULC.



Vipeq Hispania 2008 S.L.





# Quartz Particles Coating STONE VIPEQ

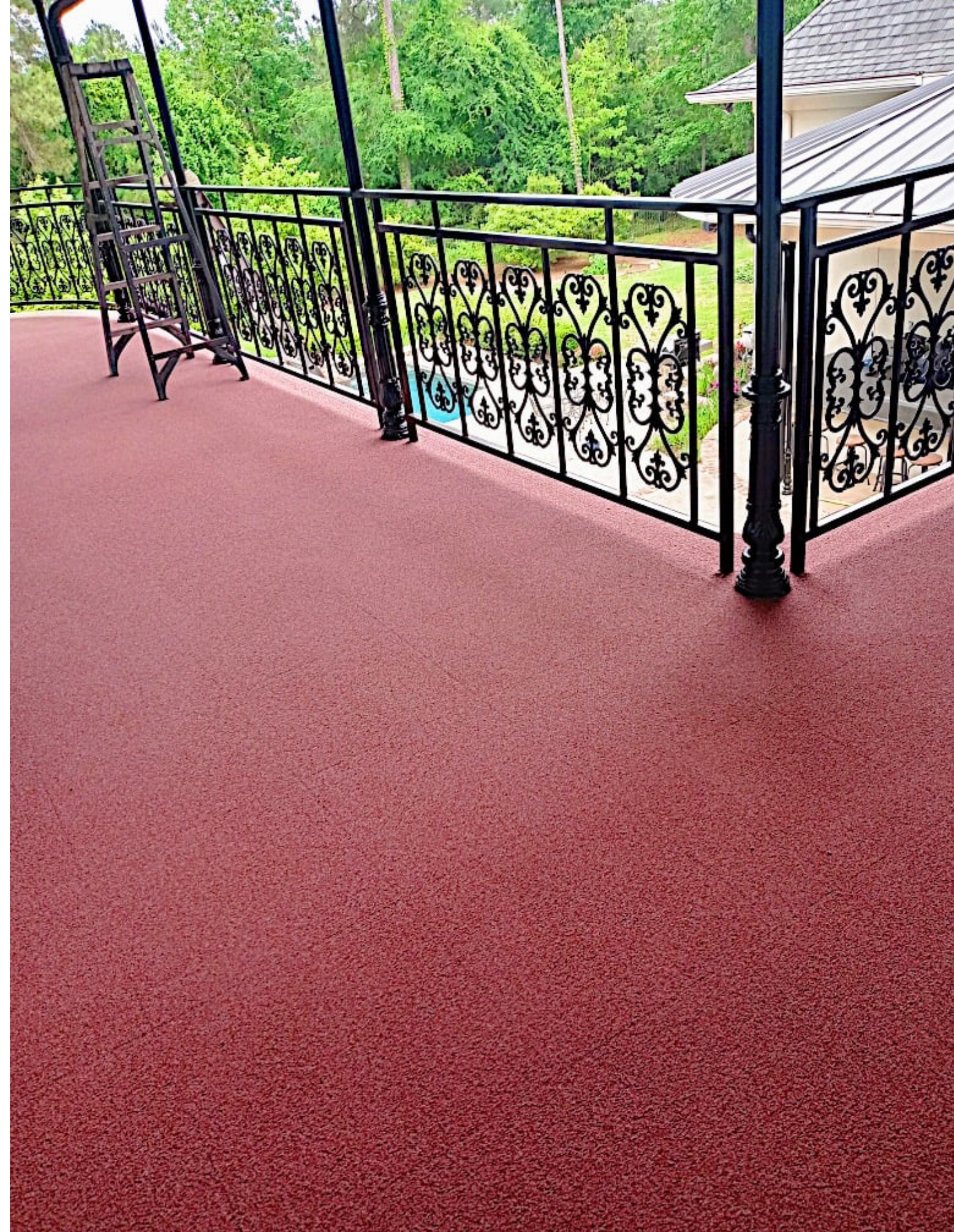
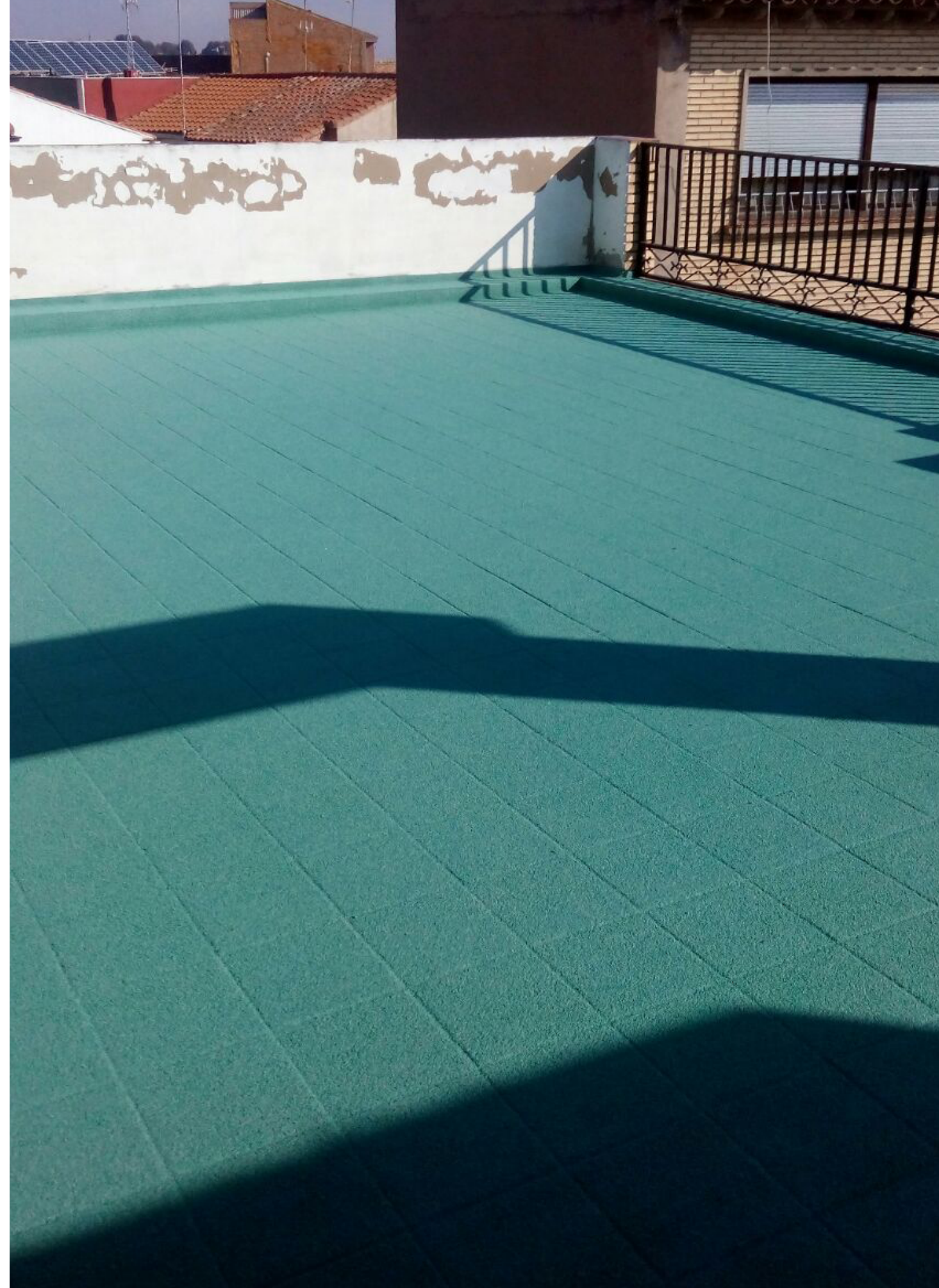
Is a coloured mineral-synthetic finish coating with high surface hardness and flexibility.

Selected quartz particles, binders, and additives make it suitable for both outdoor and indoor applications.

We warranty the product for 10 years, and it is highly resistant to UV light and salty environments.

Additionally, STONE VIPEQ is non-slip, ensuring enhanced safety in various applications.





# Quartz Particles Coating STONE VIPEQ





# STONE VIPEQ

## APPLICATIONS

- Floors on roofs, flat roofs, passable balconies and terraces.
- Finishing hard floor on pedestrian sidewalks, public areas, parks, etc.
- Interior or exterior non-slippery floors in new buildings or renovations.
- Baseboard or skirting board on walls and interior design.
- Final coating on walls and floors of bathrooms, tiling and other substrates, without removing them.

## CHARACTERISTICS

- Texture: GRAINY
- Appearance: DOUGHY PRODUCT
- High superficial hardness
- Fire reaction (UNE-EN 13501:2007): Bs1,d0
- Anti-slippery rate (UNE-ENV 12633:2003): Class 3 according to DB SUA 1 of CTE
- High flexibility and elasticity

## STONE VIPEQ SYSTEM

- STONE VIPEQ is classified as Class 3, it means it has a high level of slip resistance, suitable for outdoor and wet areas, such as swimming pool surroundings, ramps, and other high-traffic areas where slip hazards are a concern.

## PACKAGING

- 20 kg. plastic pail.
- 720 kg. pallet (36 pails)

These colours are just indicative and might be different to true-colours depending on the type of paper, printer or screen that shows them. Accurate colours can be found in the "certified official sample folder". Request them.

